

**HOPE
SUPPORT
EMPATHY
EDUCATION
INFORMATION**

*For Hospitalized and
Rehabilitating Brain
Injury Survivors and
Their Families*

*From someone who has BEEN
THERE...and DONE THAT.*



Are you interested in having a Brain Injury Peer Visitor contact you at the hospital, rehabilitation facility, by phone or email?

Are you interested in learning more about the Brain Injury Peer Visitor Association™ Program?



©2009AnnBoriskie

**BRAIN INJURY PEER
VISITOR ASSOCIATION™**

A PEER VISITOR PROGRAM

[Ann Boriskie, Director](#)

[PHONE: 770-330-8416](#)

[FAX: 770-754-9097](#)

[EMAIL:](#)

aboriskie@braininjurypeervisitor.org

[WEBSITE:](#)

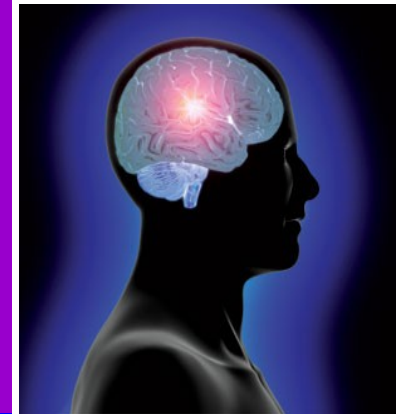
www.braininjurypeervisitor.org

**BRAIN INJURY PEER VISITOR
ASSOCIATION™**

**355 GUILDHALL GROVE
ALPHARETTA, GA 30022**

**BRAIN INJURY
PEER VISITOR
ASSOCIATION™**

**A PEER VISITOR
PROGRAM**



- *Would you like to speak to a Brain Injury Survivor?*
- *Talk to the Caregiver of a brain injured loved one?*
- *Receive a free helpful Packet of Information?*

**Ann Boriskie
Director**

aboriskie@braininjurypeervisitor.org
Phone: 770-330-8416
www.braininjurypeervisitor.org

Mission Statement

The Brain Injury Peer Visitor Association™, an organization led by volunteers, is dedicated to providing the hope, support and resources necessary to help brain injury survivors and their families navigate the often difficult and confusing recovery process associated with brain injuries.

Brain Injury Peer Visitors:

- Are brain injury survivors, family members and caregivers.
- Are trained by community brain injury professionals.
- Undergo background checks and health screenings.
- Visit survivors/families in the hospital or rehabilitation facility, and talk via phone or email.
- Offer private consultations with brain injury survivors/families.
- Provide hope, education, and resources.
- Answer questions about recovery.
- Listen to your concerns and needs.
- Give you an information packet on brain injury, with newspaper stories, booklists, resource lists, websites and more.

The Brain Injury Peer Visitor Association™'s Peer Visitor Program is modeled after the American Stroke Association's Stroke Connection Peer Visitor Program.

Support from Someone who has BEEN THERE...and DONE THAT.

Services:

- On-site visits
- Specially arranged visits
- Phone calls
- Email

Our Peer Visitors are prepared to discuss a variety of topics:

- Stages of recovery
- Future expectations
- Therapies (physical and mental)
- Social Security or disability benefits
- The Brain & Spinal Injury Trust Fund Commission
- Working in the future
- Driving in the future
- Interpersonal relationships